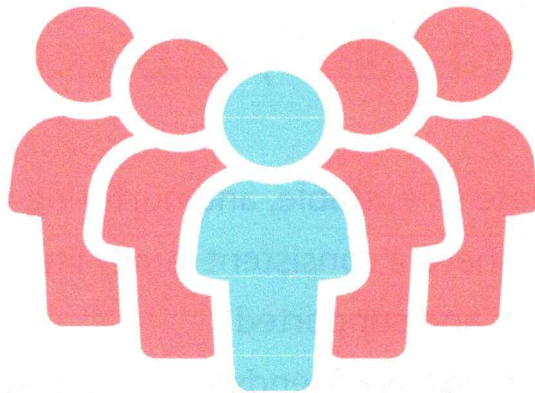




## Individual and Family Protective Factors

- Families who create safe, stable, and nurturing relationships, meaning, children have a consistent family life where they are safe, taken care of, and supported
- Children who have positive friendships and peer networks
- Children who do well in school
- Children who have caring adults outside the family who serve as mentors/role models
- Families where caregivers can meet basic needs of food, shelter, and health services for children
- Families where caregivers have college degrees or higher
- Families where caregivers have steady employment
- Families with strong social support networks and positive relationships with the people around them
- Families where caregivers engage in parental monitoring, supervision, and consistent enforcement of rules

- Families where caregivers/adults work through conflicts peacefully
- Families where caregivers help children work through problems
- Families that engage in fun, positive activities together
- Families that encourage the importance of school for children



## Community Protective Factors

- Communities where families have access to economic and financial help
- Communities where families have access to medical care and mental health services
- Communities with access to safe, stable housing
- Communities where families have access to nurturing and safe childcare
- Communities where families have access to high-quality preschool

- Communities where families have access to safe, engaging after school programs and activities
- Communities where adults have work opportunities with family-friendly policies
- Communities with strong partnerships between the community and business, health care, government, and other sectors
- Communities where residents feel connected to each other and are involved in the community