

Overview of Race and Hispanic Origin: 2010

2010 Census Briefs

Issued March 2011

C2010BR-02

INTRODUCTION

This report looks at our nation's changing racial and ethnic diversity. It is part of a series that analyzes population and housing data collected from the 2010 Census, and it provides a snapshot of race and Hispanic origin in the United States. Racial and ethnic population group distributions and growth at the national level and at lower levels of geography are presented.

This report also provides an overview of race and ethnicity concepts and definitions used in the 2010 Census. The data for this report are based on the *2010 Census Redistricting Data (Public Law 94-171) Summary File*, which is among the first 2010 Census data products to be released and is provided to each state for use in drawing boundaries for legislative districts.¹

¹ The *2010 Census Redistricting Data (Public Law 94-171) Summary File* provides data on Hispanic origin and race, including information on the population reporting more than one race as well as detailed race combinations (e.g., White **and** Asian; White **and** Black or African American **and** American Indian and Alaska Native). In this report, the multiple-race combination categories are denoted with the conjunction **and** in bold and italicized print to indicate the specific race groups that comprise the particular combination. This report discusses data for the 50 states and the District of Columbia but not Puerto Rico.

The *2010 Census Redistricting Data (Public Law 94-171) Summary File* does not contain data for detailed Hispanic origin groups (e.g., Mexican or Puerto Rican) or detailed information about race or tribes (e.g., Chinese, Samoan, or Choctaw). Therefore, these specific groups are not discussed in this report. Data on detailed Hispanic origin groups and detailed information about race and tribes will be released on a state-by-state basis as part of the *2010 Census Demographic Profile* and the *2010 Census Summary File 1*. Additional reports on the Hispanic or Latino population and selected race population groups will be released as part of the 2010 Census Briefs series. For a detailed schedule of 2010 Census products and release dates, visit <www.census.gov/population/www/cen2010/glance/index.html>.

Figure 1.

Reproduction of the Questions on Hispanic Origin and Race From the 2010 Census

→ NOTE: Please answer BOTH Question 5 about Hispanic origin and Question 6 about race. For this census, Hispanic origins are not races.

5. Is this person of Hispanic, Latino, or Spanish origin?

- ☐ No, not of Hispanic, Latino, or Spanish origin
- ☐ Yes, Mexican, Mexican Am., Chicano
- ☐ Yes, Puerto Rican
- ☐ Yes, Cuban
- ☐ Yes, another Hispanic, Latino, or Spanish origin — Print origin, for example, Argentinean, Colombian, Dominican, Nicaraguan, Salvadoran, Spaniard, and so on. ↗

6. What is this person's race? Mark ☒ one or more boxes.

- ☐ White
- ☐ Black, African Am., or Negro
- ☐ American Indian or Alaska Native — Print name of enrolled or principal tribe. ↗

- | | | |
|--|-------------------------------------|---|
| <input type="checkbox"/> Asian Indian | <input type="checkbox"/> Japanese | <input type="checkbox"/> Native Hawaiian |
| <input type="checkbox"/> Chinese | <input type="checkbox"/> Korean | <input type="checkbox"/> Guamanian or Chamorro |
| <input type="checkbox"/> Filipino | <input type="checkbox"/> Vietnamese | <input type="checkbox"/> Samoan |
| <input type="checkbox"/> Other Asian — Print race, for example, Hmong, Laotian, Thai, Pakistani, Cambodian, and so on. ↗ | | <input type="checkbox"/> Other Pacific Islander — Print race, for example, Fijian, Tongan, and so on. ↗ |

- ☐ Some other race — Print race. ↗

Source: U.S. Census Bureau, 2010 Census questionnaire.

UNDERSTANDING RACE AND HISPANIC ORIGIN DATA FROM THE 2010 CENSUS

The 2010 Census used established federal standards to collect and present data on race and Hispanic origin.

For the 2010 Census, the questions on race and Hispanic origin were asked of individuals living in the United States (see Figure 1). An individual's responses to the race question and to the Hispanic origin question were based upon

By
Karen R. Humes,
Nicholas A. Jones, and
Roberto R. Ramirez

self-identification. The U.S. Census Bureau collects race and Hispanic origin information following the guidance of the U.S. Office of Management and Budget's (OMB) 1997 *Revisions to the Standards for the Classification of Federal Data on Race and Ethnicity*.² These federal standards mandate that race and Hispanic origin (ethnicity) are separate and distinct concepts and that when collecting these data via self-identification, two different questions must be used.

Hispanic Origin

The OMB definition of Hispanic or Latino origin used in the 2010 Census is presented in the text box "Definition of Hispanic or Latino Origin Used in the 2010 Census." OMB requires federal agencies to use a minimum of two ethnicities: Hispanic or Latino and Not Hispanic or Latino. Hispanic origin can be viewed as the heritage, nationality group, lineage, or country of birth of the person or the person's parents or ancestors before their arrival in the United States. People who identify their origin as Hispanic, Latino, or Spanish may be any race.³

Definition of Hispanic or Latino Origin Used in the 2010 Census

"Hispanic or Latino" refers to a person of Cuban, Mexican, Puerto Rican, South or Central American, or other Spanish culture or origin regardless of race.

² The 1997 *Revisions to the Standards for the Classification of Federal Data on Race and Ethnicity*, issued by OMB, is available at <www.whitehouse.gov/omb/fedreg/1997standards.html>.

³ The terms "Hispanic or Latino" and "Hispanic" are used interchangeably in this report.

The 2010 Census question on Hispanic origin included five separate response categories and one area where respondents could write-in a specific Hispanic origin group. The first response category is intended for respondents who do not identify as Hispanic. The remaining response categories ("Mexican, Mexican Am., or Chicano"; "Puerto Rican"; "Cuban"; and "Another Hispanic, Latino, or Spanish origin") and write-in answers can be combined to create the OMB category of Hispanic.⁴

Race

The OMB definitions of the race categories used in the 2010 Census, plus the Census Bureau's definition of Some Other Race, are presented in the text box "Definition of Race Categories Used in the 2010 Census." Starting in 1997, OMB required federal agencies to use a minimum of five race categories: White, Black or African American, American Indian or Alaska Native, Asian, and Native Hawaiian or Other Pacific Islander. For respondents unable to identify with any of these five race categories, OMB approved the Census Bureau's inclusion of a sixth category—Some Other Race—on the Census 2000 and 2010 Census questionnaires.

⁴ There were three changes to the Hispanic origin question for the 2010 Census. First, the wording of the question changed from "Is this person Spanish/Hispanic/Latino?" in 2000 to "Is this person of Hispanic, Latino, or Spanish origin?" in 2010. Second, in 2000, the question provided an instruction, "Mark ☒ the 'No' box if **not** Spanish/Hispanic/Latino." The 2010 Census question provided no specific instruction for non-Hispanic respondents. Third, in 2010, the "Yes, another Hispanic, Latino, or Spanish origin" category provided examples of six Hispanic origin groups (Argentinean, Colombian, Dominican, Nicaraguan, Salvadoran, Spaniard, and so on) and instructed respondents to "print origin." In 2000, no Hispanic origin examples were given.

Data on race have been collected since the first U.S. decennial census in 1790.⁵ For the first time in Census 2000, individuals were presented with the option to self-identify with more than one race and this continued with the 2010 Census, as prescribed by OMB. There are 57 possible multiple race combinations involving the five OMB race categories and Some Other Race.

The 2010 Census question on race included 15 separate response categories and three areas where respondents could write-in detailed information about their race.⁶ The response categories and write-in answers can be combined to create the five minimum OMB race categories plus Some Other Race. In addition to White, Black or African American, American Indian and Alaska Native, and Some Other Race, 7 of the 15 response categories are Asian groups and 4 are Native Hawaiian and Other Pacific Islander groups.⁷

⁵ For information about comparability of 2010 Census data on race and Hispanic origin to data collected in previous censuses, see the *2010 Census Redistricting Data (Public Law 94-171) Summary File—Technical Documentation* at <www.census.gov/prod/cen2010/doc/pl94-171.pdf>.

⁶ There were two changes to the question on race for the 2010 Census. First, the wording of the race question was changed from "What is this person's race? Mark ☒ one or more races to indicate what this person considers himself/herself to be" in 2000 to "What is this person's race? Mark ☒ one or more boxes" for 2010. Second, in 2010, examples were added to the "Other Asian" response category (Hmong, Laotian, Thai, Pakistani, Cambodian, and so on) and the "Other Pacific Islander" response category (Fijian, Tongan, and so on). In 2000, no examples were given in the race question.

⁷ The race categories included in the census questionnaire generally reflect a social definition of race recognized in this country and are not an attempt to define race biologically, anthropologically, or genetically. In addition, it is recognized that the categories of the race question include race and national origin or sociocultural groups.

Definition of Race Categories Used in the 2010 Census

“White” refers to a person having origins in any of the original peoples of Europe, the Middle East, or North Africa. It includes people who indicated their race(s) as “White” or reported entries such as Irish, German, Italian, Lebanese, Arab, Moroccan, or Caucasian.

“Black or African American” refers to a person having origins in any of the Black racial groups of Africa. It includes people who indicated their race(s) as “Black, African Am., or Negro” or reported entries such as African American, Kenyan, Nigerian, or Haitian.

“American Indian or Alaska Native” refers to a person having origins in any of the original peoples of North and South America (including Central America) and who maintains tribal affiliation or community attachment. This category includes people who indicated their race(s) as “American Indian or Alaska Native” or reported their enrolled or principal tribe, such as Navajo, Blackfeet, Inupiat, Yup’ik, or Central American Indian groups or South American Indian groups.

“Asian” refers to a person having origins in any of the original peoples of the Far East, Southeast Asia, or the Indian subcontinent, including, for example, Cambodia, China, India, Japan, Korea, Malaysia, Pakistan, the Philippine Islands, Thailand, and Vietnam. It includes people who indicated their race(s) as “Asian” or reported entries such as “Asian Indian,” “Chinese,” “Filipino,” “Korean,” “Japanese,” “Vietnamese,” and “Other Asian” or provided other detailed Asian responses.

“Native Hawaiian or Other Pacific Islander” refers to a person having origins in any of the original peoples of Hawaii, Guam, Samoa, or other Pacific Islands. It includes people who indicated their race(s) as “Pacific Islander” or reported entries such as “Native Hawaiian,” “Guamanian or Chamorro,” “Samoan,” and “Other Pacific Islander” or provided other detailed Pacific Islander responses.

“Some Other Race” includes all other responses not included in the White, Black or African American, American Indian or Alaska Native, Asian, and Native Hawaiian or Other Pacific Islander race categories described above. Respondents reporting entries such as multiracial, mixed, interracial, or a Hispanic or Latino group (for example, Mexican, Puerto Rican, Cuban, or Spanish) in response to the race question are included in this category.

RACE AND HISPANIC ORIGIN IN THE 2010 CENSUS

Data from the 2010 Census provide insights to our racially and ethnically diverse nation. According to the 2010 Census, 308.7 million

people resided in the United States on April 1, 2010—an increase of 27.3 million people, or 9.7 percent, between 2000 and 2010. The vast majority of the growth in the total population came from increases in those who reported their race(s) as

something other than White alone and those who reported their ethnicity as Hispanic or Latino.⁸

More than half of the growth in the total population of the United States between 2000 and 2010 was due to the increase in the Hispanic population.

In 2010, there were 50.5 million Hispanics in the United States, composing 16 percent of the total population (see Table 1). Between 2000 and 2010, the Hispanic population grew by 43 percent—rising from 35.3 million in 2000, when this group made up 13 percent of the total population.⁹ The Hispanic population increased by 15.2 million between 2000 and 2010, accounting for over half of the 27.3 million increase in the total population of the United States.

The non-Hispanic population grew relatively slower over the decade, about 5 percent. Within the non-Hispanic population, the number of people who reported their race as White alone grew even slower between 2000 and 2010 (1 percent). While the non-Hispanic White alone population increased numerically from 194.6 million to 196.8 million over the 10-year period, its proportion of the total population declined from 69 percent to 64 percent.

⁸ For the purposes of this report, the term “reported” is used to refer to the response provided by respondents as well as responses assigned during the editing and imputation process.

⁹ The observed changes in race and Hispanic origin counts between Census 2000 and the 2010 Census could be attributed to a number of factors. Demographic change since 2000, which includes births and deaths in a geographic area and migration in and out of a geographic area, will have an impact on the resulting 2010 Census counts. Additionally, some changes in the race and Hispanic origin questions’ wording and format since Census 2000 could have influenced reporting patterns in the 2010 Census.

Table 1.
Population by Hispanic or Latino Origin and by Race for the United States: 2000 and 2010

(For information on confidentiality protection, nonsampling error, and definitions, see www.census.gov/prod/cen2010/doc/pl94-171.pdf)

| Hispanic or Latino origin and race | 2000 | | 2010 | | Change, 2000 to 2010 | |
|--|--------------------|--------------------------------------|--------------------|--------------------------------------|-------------------------|------------|
| | Number | Percentage of total population | Number | Percentage of total population | Number | Percent |
| HISPANIC OR LATINO ORIGIN AND RACE | | | | | | |
| Total population | 281,421,906 | 100.0 | 308,745,538 | 100.0 | 27,323,632 | 9.7 |
| Hispanic or Latino | 35,305,818 | 12.5 | 50,477,594 | 16.3 | 15,171,776 | 43.0 |
| Not Hispanic or Latino | 246,116,088 | 87.5 | 258,267,944 | 83.7 | 12,151,856 | 4.9 |
| White alone | 194,552,774 | 69.1 | 196,817,552 | 63.7 | 2,264,778 | 1.2 |
| RACE | | | | | | |
| Total population | 281,421,906 | 100.0 | 308,745,538 | 100.0 | 27,323,632 | 9.7 |
| One Race | 274,595,678 | 97.6 | 299,736,465 | 97.1 | 25,140,787 | 9.2 |
| White | 211,460,626 | 75.1 | 223,553,265 | 72.4 | 12,092,639 | 5.7 |
| Black or African American | 34,658,190 | 12.3 | 38,929,319 | 12.6 | 4,271,129 | 12.3 |
| American Indian and Alaska Native | 2,475,956 | 0.9 | 2,932,248 | 0.9 | 456,292 | 18.4 |
| Asian | 10,242,998 | 3.6 | 14,674,252 | 4.8 | 4,431,254 | 43.3 |
| Native Hawaiian and Other Pacific Islander | 398,835 | 0.1 | 540,013 | 0.2 | 141,178 | 35.4 |
| Some Other Race | 15,359,073 | 5.5 | 19,107,368 | 6.2 | 3,748,295 | 24.4 |
| Two or More Races ¹ | 6,826,228 | 2.4 | 9,009,073 | 2.9 | 2,182,845 | 32.0 |

¹ In Census 2000, an error in data processing resulted in an overstatement of the Two or More Races population by about 1 million people (about 15 percent) nationally, which almost entirely affected race combinations involving Some Other Race. Therefore, data users should assess observed changes in the Two or More Races population and race combinations involving Some Other Race between Census 2000 and the 2010 Census with caution. Changes in specific race combinations not involving Some Other Race, such as White **and** Black or African American or White **and** Asian, generally should be more comparable.

Sources: U.S. Census Bureau, *Census 2000 Redistricting Data (Public Law 94-171) Summary File*, Tables PL1 and PL2; and *2010 Census Redistricting Data (Public Law 94-171) Summary File*, Tables P1 and P2.

The overwhelming majority of the total population of the United States reported only one race in 2010.

In the 2010 Census, 97 percent of all respondents (299.7 million) reported only one race (see Table 1).¹⁰ The largest group reported

White alone (223.6 million), accounting for 72 percent of all people living in the United States.¹¹ The Black or African-American alone population was 38.9 million and represented 13 percent of the total population.¹² There were 2.9 million respondents who indicated American Indian and Alaska Native alone (0.9 percent). Approximately 14.7 million (about 5 percent of all respondents) identified their race

as Asian alone. The smallest major race group was Native Hawaiian and Other Pacific Islander alone (0.5 million) and represented 0.2 percent of the total population. The remainder of respondents who reported only one race—19.1 million (6 percent of all respondents)—were classified as Some Other Race alone. People who reported more than one race numbered 9.0 million in the 2010 Census and made up about 3 percent of the total population.

The Asian population grew faster than any other major race group between 2000 and 2010.

In the United States, all major race groups increased in population size between 2000 and 2010, but they

¹⁰ Individuals who responded to the question on race by indicating only one race are referred to as the *race-alone* population or the group that reported only one race category. Six categories make up this population: White alone, Black or African American alone, American Indian and Alaska Native alone, Asian alone, Native Hawaiian and Other Pacific Islander alone, and Some Other Race alone. Individuals who chose more than 1 of the 6 race categories are referred to as the Two or More Races population. All respondents who indicated more than one race can be collapsed into the Two or More Races category which, combined with the six race-alone categories, yields seven mutually exclusive and exhaustive categories. Thus, the six race-alone categories and the Two or More Races category sum to the total population.

¹¹ As a matter of policy, the Census Bureau does not advocate the use of the *alone* population over the *alone-or-in-combination* population or vice versa. The use of the *alone* population in sections of this report does not imply that it is a preferred method of presenting or analyzing data. The same is true for sections of this report that focus on the *alone-or-in-combination* population. Data on race from the 2010 Census can be presented and discussed in a variety of ways.

¹² The terms "Black or African American" and "Black" are used interchangeably in this report.

grew at different rates. Over the decade, the Asian alone population experienced the fastest rate of growth and the White alone population experienced the slowest rate of growth, with the other major race groups' growth spanning the range in between. Of the 27.3 million people added to the total population of the United States between 2000 and 2010, the White alone population made up just under half of the growth—increasing 12.1 million. Within the White alone population, the vast majority of the growth was propelled by the Hispanic population.

The Asian alone population increased by 43 percent between 2000 and 2010, more than any other major race group. The Asian alone population had the second-largest numeric change (4.4 million), growing from 10.2 million in 2000 to 14.7 million in 2010. The Asian alone population gained the most in share of the total population, moving up from about 4 percent in 2000 to about 5 percent in 2010.

The Native Hawaiian and Other Pacific Islander alone population, the smallest major race group, also grew substantially between 2000 and 2010, increasing by more than one-third. This population numbered 398,835 in 2000, rising to 540,013 in 2010 with its proportion of the total population changing from 0.1 percent to 0.2 percent, respectively.

Between 2000 and 2010, the population classified as Some Other Race alone increased considerably,

growing by about one-quarter. This population climbed from 15.4 million in 2000 to 19.1 million in 2010 and was approximately 6 percent of the total population in both decennial censuses. Most of this growth was due to increases in the Hispanic population.

An 18 percent growth in the American Indian and Alaska Native alone population occurred between 2000 and 2010. This population, also relatively small numerically, maintained its proportion of the total population between decennial censuses (0.9 percent) while growing from 2.5 million to 2.9 million.

While the Black alone population had the third-largest numeric increase in population size over the decade (4.3 million), behind the White alone and Asian alone populations, it grew slower than most other major race groups. In fact, the Black alone population exhibited the smallest percentage growth outside of the White alone population, increasing 12 percent between 2000 and 2010. This population rose from 34.7 million in 2000 to 38.9 million in 2010, making up 12 percent and 13 percent of the total population, respectively.

The only major race group to experience a decrease in its proportion of the total population was the White alone population. While this group increased the most numerically between decennial censuses (211.5 million to 223.6 million), its share of the total population fell from 75 percent in 2000 to 72 percent in 2010.

The Two or More Races population was one of the fastest-growing groups over the decade. This population increased approximately one-third between 2000 and 2010.¹³

The Hispanic population predominantly identified as either White or Some Other Race.

People of Hispanic origin may be any race. For the 2010 Census, a new instruction was added immediately preceding the questions on Hispanic origin and race, which was not used in Census 2000. The instruction stated that “For this census, Hispanic origins are not races” because in the federal statistical system, Hispanic origin is considered to be a separate concept from race. However, this did not preclude individuals from self-identifying their race as “Latino,” “Mexican,” “Puerto Rican,” “Salvadoran,” or other national origins or ethnicities; in fact, many did so. If the response provided to the race question could not be classified in one or more of the five OMB race groups, it was generally classified in the category Some Other Race. Therefore, responses to the question on race that reflect a Hispanic origin were classified in the Some Other Race category.

¹³ In Census 2000, an error in data processing resulted in an overstatement of the Two or More Races population by about 1 million people (about 15 percent) nationally, which almost entirely affected race combinations involving Some Other Race. Therefore, data users should assess observed changes in the Two or More Races population and race combinations involving Some Other Race between Census 2000 and the 2010 Census with caution. Changes in specific multiple-race combinations not involving Some Other Race, such as White **and** Black or White **and** Asian, generally, should be more comparable.

The 2010 Census racial distributions of the Hispanic population and of the non-Hispanic population differ and are shown in Table 2. Over half of the Hispanic population identified as White and no other race, while about one-third provided responses that were classified as Some Other Race alone when responding to the question on race. Much smaller proportions of Hispanics identified as other race groups alone: Black alone (3 percent), American Indian and Alaska Native alone (1 percent), Asian alone (0.4 percent), and Native Hawaiian and Other Pacific Islander alone (0.1 percent).

The racial distribution of the non-Hispanic population, on the other hand, was mostly White alone (76 percent), Black alone (15 percent), and Asian alone (6 percent). Less than 1 percent of non-Hispanics provided responses to the race question that were classified as Some Other Race alone (0.2 percent).

In 2010, 6 percent of Hispanics reported multiple races. Among non-Hispanics, 2 percent reported more than one race.

Native Hawaiians and Other Pacific Islanders and American Indians and Alaska Natives were more likely than other groups to report multiple races.

In the 2010 Census, the population reporting their race as White, either alone or with at least one other race, was the largest of all the alone-or-in-combination categories (231.0 million) and represented about three-fourths of the total

**Table 2.
Population by Hispanic or Latino Origin and Race for the United States: 2010**

(For information on confidentiality protection, nonsampling error, and definitions, see www.census.gov/prod/cen2010/doc/pl94-171.pdf)

| Hispanic or Latino origin and race | Number | Percent |
|--|--------------------|--------------|
| HISPANIC OR LATINO | | |
| Total | 50,477,594 | 100.0 |
| Race | | |
| One Race | 47,435,002 | 94.0 |
| White | 26,735,713 | 53.0 |
| Black or African American | 1,243,471 | 2.5 |
| American Indian and Alaska Native | 685,150 | 1.4 |
| Asian | 209,128 | 0.4 |
| Native Hawaiian and Other Pacific Islander | 58,437 | 0.1 |
| Some Other Race | 18,503,103 | 36.7 |
| Two or More Races | 3,042,592 | 6.0 |
| NOT HISPANIC OR LATINO | | |
| Total | 258,267,944 | 100.0 |
| Race | | |
| One Race | 252,301,463 | 97.7 |
| White | 196,817,552 | 76.2 |
| Black or African American | 37,685,848 | 14.6 |
| American Indian and Alaska Native | 2,247,098 | 0.9 |
| Asian | 14,465,124 | 5.6 |
| Native Hawaiian and Other Pacific Islander | 481,576 | 0.2 |
| Some Other Race | 604,265 | 0.2 |
| Two or More Races | 5,966,481 | 2.3 |

Source: U.S. Census Bureau, 2010 Census Redistricting Data (Public Law 94-171) Summary File, Tables P1 and P2.

population (see Table 3).¹⁴ People who reported their race as White in combination with one or more additional races numbered 7.5 million, making up 2 percent of the total population. About 14 percent of

the total population reported their race as Black, either alone or with at least one other race, which was the second-largest of the alone-or-in-combination categories (42.0 million).

¹⁴ The maximum number of people reporting a particular race is reflected in the race-alone-or-in-combination concept. This represents the number of times responses were part of 1 of the 6 major race categories, either alone or in combination with the other five race categories. There are six race-alone-or-in-combination categories, which are not mutually exclusive: White alone or in combination, Black alone or in combination, American Indian and Alaska Native alone or in combination, Asian alone or in combination, Native Hawaiian and Other Pacific Islander alone or in combination, and Some Other Race alone or in combination. For example, a respondent who indicated Asian **and** White was counted in the Asian alone-or-in-combination category as well as in the White alone-or-in-combination category. Therefore, the sum of all race-alone-or-in-combination categories equals the number of races reported (i.e., responses), which exceeds the total population.

There were 21.7 million people classified as Some Other Race alone or in combination and 17.3 million people classified as Asian alone or in combination in the 2010 Census, making up 7 percent and 6 percent of the total population, respectively. There were comparable levels and proportions of the total population who indicated race groups in combination with Some Other Race (2.6 million and 0.9 percent) and with Asian (2.6 million and 0.9 percent).

Table 3.
Race by the Alone-or-In-Combination, Alone, and In-Combination Categories for the United States: 2010

(For information on confidentiality protection, nonsampling error, and definitions, see www.census.gov/prod/cen2010/doc/pl94-171.pdf)

| Race | Number | Percentage of total population | Percentage of alone or in combination |
|---|--------------------|--------------------------------|---------------------------------------|
| Total population | 308,745,538 | 100.0 | (X) |
| WHITE | | | |
| Alone or in combination | 231,040,398 | 74.8 | (X) |
| Alone | 223,553,265 | 72.4 | 96.8 |
| In combination | 7,487,133 | 2.4 | 3.2 |
| BLACK OR AFRICAN AMERICAN | | | |
| Alone or in combination | 42,020,743 | 13.6 | (X) |
| Alone | 38,929,319 | 12.6 | 92.6 |
| In combination | 3,091,424 | 1.0 | 7.4 |
| AMERICAN INDIAN AND ALASKA NATIVE | | | |
| Alone or in combination | 5,220,579 | 1.7 | (X) |
| Alone | 2,932,248 | 0.9 | 56.2 |
| In combination | 2,288,331 | 0.7 | 43.8 |
| ASIAN | | | |
| Alone or in combination | 17,320,856 | 5.6 | (X) |
| Alone | 14,674,252 | 4.8 | 84.7 |
| In combination | 2,646,604 | 0.9 | 15.3 |
| NATIVE HAWAIIAN AND OTHER PACIFIC ISLANDER | | | |
| Alone or in combination | 1,225,195 | 0.4 | (X) |
| Alone | 540,013 | 0.2 | 44.1 |
| In combination | 685,182 | 0.2 | 55.9 |
| SOME OTHER RACE | | | |
| Alone or in combination | 21,748,084 | 7.0 | (X) |
| Alone | 19,107,368 | 6.2 | 87.9 |
| In combination | 2,640,716 | 0.9 | 12.1 |

(X) Not applicable.

Note: The total population is equal to the number of respondents. In the 2010 Census, there were 308,745,538 respondents. The total of all race categories alone or in combination with one or more other races is equal to the number of responses; therefore, it adds to more than the total population.

Source: U.S. Census Bureau, *2010 Census Redistricting Data (Public Law 94-171) Summary File*, Table P1.

The two smallest alone-or-in-combination categories were American Indian and Alaska Native (5.2 million) and Native Hawaiian and Other Pacific Islander (1.2 million), making up 2 percent and 0.4 percent of the total population, respectively. These two categories were unique in that large proportions of these populations indicated more than one race, compared with other major race groups (see Figure 2). There were more reports of Native Hawaiian and Other Pacific Islander in combination with one or more additional races than there were of Native Hawaiian and Other Pacific Islander alone (0.7 million and 0.5 million, respectively). Almost as many people indicated American Indian and Alaska Native in combination with one or more additional races as people who indicated American Indian and Alaska Native alone (2.3 million and 2.9 million, respectively). Thus, over half of the Native Hawaiian and Other Pacific Islander population and almost half of the American Indian and Alaska Native population reported more than one race.

Most people who reported multiple races provided exactly two races in 2010; White *and* Black was the largest multiple-race combination.

Over the last 10 years, considerable research has been conducted on people of multiple races, and how they self-identify has become a more common part of our discussions and understanding of race and ethnicity. Results from the 2010 Census provide new information on the diversity and changes in the Two or More Races population in the United States.

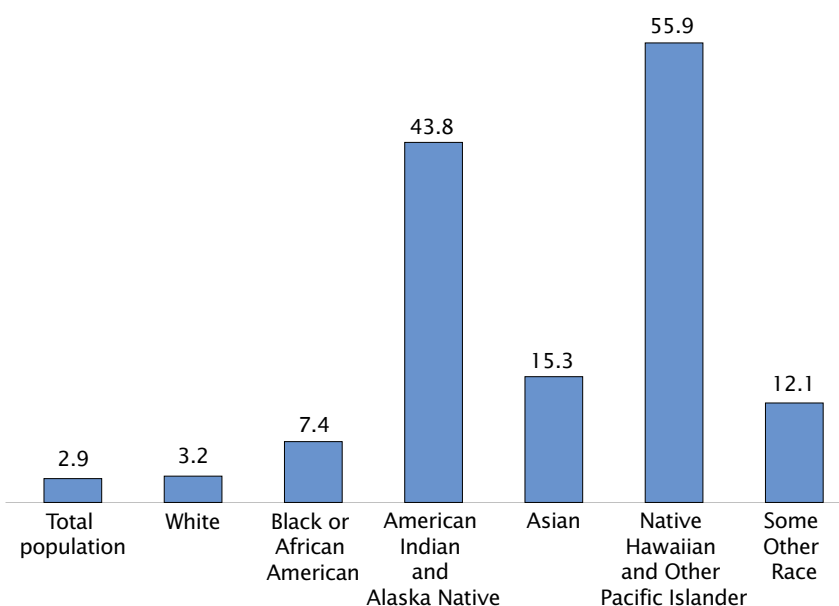
Among people who reported more than one race in 2010, the vast majority (about 92 percent) reported exactly two races (see Table 4). An additional 8 percent of the Two or More Races population reported three races and less than 1 percent reported four or more races.

In 2010, four groups were, by far, the largest multiple-race combinations in the United States: White *and* Black (1.8 million), White *and* Some Other Race (1.7 million), White *and* Asian (1.6 million), and White *and* American Indian and Alaska Native (1.4 million). Together, these four combinations composed nearly three-fourths of the multiple-race population in the 2010 Census (see Figure 3).

Figure 2.

Percentage of Major Race Groups Reporting Multiple Races: 2010

(For more information on confidentiality protection, nonsampling error, and definitions, see www.census.gov/prod/cen2010/doc/pl94-171.pdf)



Note: Specified race group refers to the alone or in-combination population.

Source: U.S. Census Bureau, *2010 Census Redistricting Data (Public Law 94-171) Summary File*, Table P1.

Different multiple-race reporting patterns occurred for Hispanics and non-Hispanics.

Tables 5 through 10 present data for the major race groups and their largest multiple-race combinations by Hispanic origin. A general pattern existed in these data tables for people who reported more than one race in the 2010 Census. There

were more reports of multiple-race combinations that included White than reports of combinations involving any other group. This basic pattern also existed among non-Hispanics. However, among Hispanics, relatively large proportions reported multiple-race combinations involving Some Other Race, as well as combinations involving White.

Table 4.

Two or More Races Population by Number of Races and Selected Combinations for the United States: 2010

(For information on confidentiality protection, nonsampling error, and definitions, see www.census.gov/prod/cen2010/doc/pl94-171.pdf)

| Race | Number | Percent |
|--|------------------|--------------|
| Two or More Races population | 9,009,073 | 100.0 |
| Two races | 8,265,318 | 91.7 |
| White; Black or African American | 1,834,212 | 20.4 |
| White; American Indian and Alaska Native | 1,432,309 | 15.9 |
| White; Asian | 1,623,234 | 18.0 |
| White; Native Hawaiian and Other Pacific Islander | 169,991 | 1.9 |
| White; Some Other Race | 1,740,924 | 19.3 |
| Black or African American; American Indian and Alaska Native | 269,421 | 3.0 |
| Black or African American; Asian | 185,595 | 2.1 |
| Black or African American; Native Hawaiian and Other Pacific Islander | 50,308 | 0.6 |
| Black or African American; Some Other Race | 314,571 | 3.5 |
| American Indian and Alaska Native; Asian | 58,829 | 0.7 |
| American Indian and Alaska Native; Native Hawaiian and Other Pacific Islander | 11,039 | 0.1 |
| American Indian and Alaska Native; Some Other Race | 115,752 | 1.3 |
| Asian; Native Hawaiian and Other Pacific Islander | 165,690 | 1.8 |
| Asian; Some Other Race | 234,462 | 2.6 |
| Native Hawaiian and Other Pacific Islander; Some Other Race | 58,981 | 0.7 |
| Three races | 676,469 | 7.5 |
| White; Black or African American; American Indian and Alaska Native | 230,848 | 2.6 |
| White; Black or African American; Asian | 61,511 | 0.7 |
| White; Black or African American; Native Hawaiian and Other Pacific Islander | 9,245 | 0.1 |
| White; Black or African American; Some Other Race | 46,641 | 0.5 |
| White; American Indian and Alaska Native; Asian | 45,960 | 0.5 |
| White; American Indian and Alaska Native; Native Hawaiian and Other Pacific Islander | 8,656 | 0.1 |
| White; American Indian and Alaska Native; Some Other Race | 30,941 | 0.3 |
| White; Asian; Native Hawaiian and Other Pacific Islander | 143,126 | 1.6 |
| White; Asian; Some Other Race | 35,786 | 0.4 |
| White; Native Hawaiian and Other Pacific Islander; Some Other Race | 9,181 | 0.1 |
| Black or African American; American Indian and Alaska Native; Asian | 9,460 | 0.1 |
| Black or African American; American Indian and Alaska Native; Native Hawaiian and Other Pacific Islander | 2,142 | — |
| Black or African American; American Indian and Alaska Native; Some Other Race | 8,236 | 0.1 |
| Black or African American; Asian; Native Hawaiian and Other Pacific Islander | 7,295 | 0.1 |
| Black or African American; Asian; Some Other Race | 8,122 | 0.1 |
| Black or African American; Native Hawaiian and Other Pacific Islander; Some Other Race | 4,233 | — |
| American Indian and Alaska Native; Asian; Native Hawaiian and Other Pacific Islander | 3,827 | — |
| American Indian and Alaska Native; Asian; Some Other Race | 3,785 | — |
| American Indian and Alaska Native; Native Hawaiian and Other Pacific Islander; Some Other Race | 2,000 | — |
| Asian; Native Hawaiian and Other Pacific Islander; Some Other Race | 5,474 | 0.1 |
| Four races | 57,875 | 0.6 |
| Five races | 8,619 | 0.1 |
| Six races | 792 | — |

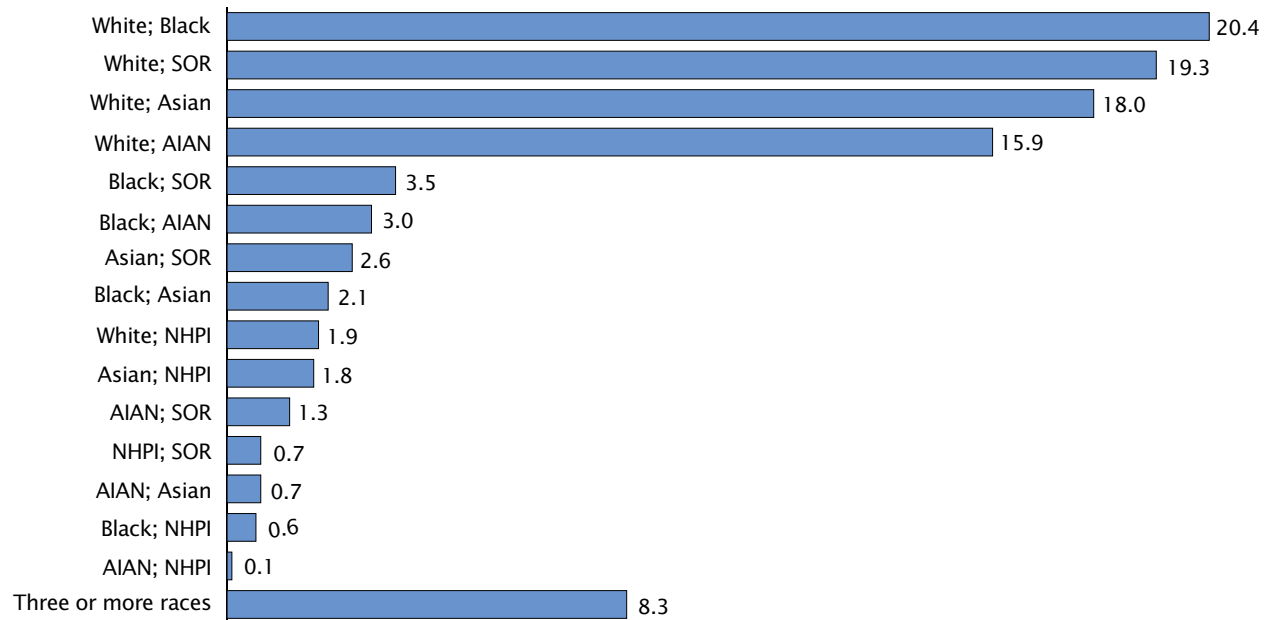
— Percentage rounds to 0.0.

Source: U.S. Census Bureau, *2010 Census Redistricting Data (Public Law 94-171) Summary File*, Table P1.

Figure 3.

Percentage Distribution of People Who Reported Multiple Races: 2010

(For more information on confidentiality protection, nonsampling error, and definitions, see www.census.gov/prod/cen2010/doc/pl94-171.pdf)



Note: People reporting multiple races represented 2.9 percent of the total population. Black refers to Black or African American; AIAN refers to American Indian and Alaska Native; NHPI refers to Native Hawaiian and Other Pacific Islander; SOR refers to Some Other Race.

Source: U.S. Census Bureau, *2010 Census Redistricting Data (Public Law 94-171) Summary File*, Table P1.

People who identified as White were the most likely to report only one race.

In the 2010 Census, 97 percent of people in the White alone-or-in-combination category reported White and no other race (see

Table 5). Among the 7.5 million people who reported they were White and one or more additional races, one-fourth reported White **and** Black, and nearly one-fourth reported White **and** Some Other Race. Another one-fifth reported

White **and** Asian, and nearly one-fifth reported White **and** American Indian and Alaska Native. This was a fairly even distribution of responses among the four largest combinations.

Table 5.
The White Population and Largest Multiple-Race Combinations by Hispanic or Latino Origin for the United States: 2010

(For information on confidentiality protection, nonsampling error, and definitions, see www.census.gov/prod/cen2010/doc/pl94-171.pdf)

| Race | Number | Percent | Percentage of White in combination |
|--|--------------------|--------------|------------------------------------|
| WHITE ALONE OR IN COMBINATION | | | |
| Total | 231,040,398 | 100.0 | (X) |
| White alone | 223,553,265 | 96.8 | (X) |
| White in combination | 7,487,133 | 3.2 | 100.0 |
| White; Black or African American | 1,834,212 | 0.8 | 24.5 |
| White; Some Other Race | 1,740,924 | 0.8 | 23.3 |
| White; Asian | 1,623,234 | 0.7 | 21.7 |
| White; American Indian and Alaska Native ... | 1,432,309 | 0.6 | 19.1 |
| White; Black or African American; American Indian and Alaska Native | 230,848 | 0.1 | 3.1 |
| All other combinations including White | 625,606 | 0.3 | 8.4 |
| Hispanic or Latino | 29,184,290 | 100.0 | (X) |
| White alone | 26,735,713 | 91.6 | (X) |
| White in combination | 2,448,577 | 8.4 | 100.0 |
| White; Black or African American | 245,850 | 0.8 | 10.0 |
| White; Some Other Race | 1,601,125 | 5.5 | 65.4 |
| White; Asian | 135,522 | 0.5 | 5.5 |
| White; American Indian and Alaska Native ... | 226,385 | 0.8 | 9.2 |
| White; Black or African American; American Indian and Alaska Native | 50,000 | 0.2 | 2.0 |
| All other combinations including White | 189,695 | 0.6 | 7.7 |
| Not Hispanic or Latino | 201,856,108 | 100.0 | (X) |
| White alone | 196,817,552 | 97.5 | (X) |
| White in combination | 5,038,556 | 2.5 | 100.0 |
| White; Black or African American | 1,588,362 | 0.8 | 31.5 |
| White; Some Other Race | 139,799 | 0.1 | 2.8 |
| White; Asian | 1,487,712 | 0.7 | 29.5 |
| White; American Indian and Alaska Native ... | 1,205,924 | 0.6 | 23.9 |
| White; Black or African American; American Indian and Alaska Native | 180,848 | 0.1 | 3.6 |
| All other combinations including White | 435,911 | 0.2 | 8.7 |

(X) Not applicable.

Note: Largest combinations based on White in-combination population.

Source: U.S. Census Bureau, *2010 Census Redistricting Data (Public Law 94-171) Summary File*, Tables P1 and P2.

Table 5 shows that 29.2 million people of Hispanic origin reported that they were either White alone or White in combination with another race. Of the 2.4 million Hispanics who reported their race as White in combination with one or more additional races, almost two-thirds were classified as White **and** Some Other Race.

The multiple-race reporting pattern was different for non-Hispanic Whites. Of the 5.0 million non-Hispanics who reported that they were White and one or more additional races, about one-third reported White **and** Black, nearly one-third reported White **and** Asian, and about one-fourth reported White **and** American Indian and Alaska Native.

Table 6.
The Black or African-American Population and Largest Multiple-Race Combinations by Hispanic or Latino Origin for the United States: 2010

(For information on confidentiality protection, nonsampling error, and definitions, see www.census.gov/prod/cen2010/doc/pl94-171.pdf)

| Race | Number | Percent | Percentage of Black or African American in combination |
|---|-------------------|--------------|--|
| BLACK OR AFRICAN AMERICAN ALONE OR IN COMBINATION | | | |
| Total | 42,020,743 | 100.0 | (X) |
| Black or African American alone | 38,929,319 | 92.6 | (X) |
| Black or African American in combination | 3,091,424 | 7.4 | 100.0 |
| Black or African American; White | 1,834,212 | 4.4 | 59.3 |
| Black or African American; Some Other Race | 314,571 | 0.7 | 10.2 |
| Black or African American; American Indian and Alaska Native | 269,421 | 0.6 | 8.7 |
| Black or African American; White; American Indian and Alaska Native | 230,848 | 0.5 | 7.5 |
| Black or African American; Asian | 185,595 | 0.4 | 6.0 |
| All other combinations including Black or African American | 256,777 | 0.6 | 8.3 |
| Hispanic or Latino | 1,897,218 | 100.0 | (X) |
| Black or African American alone | 1,243,471 | 65.5 | (X) |
| Black or African American in combination | 653,747 | 34.5 | 100.0 |
| Black or African American; White | 245,850 | 13.0 | 37.6 |
| Black or African American; Some Other Race | 227,648 | 12.0 | 34.8 |
| Black or African American; American Indian and Alaska Native | 31,571 | 1.7 | 4.8 |
| Black or African American; White; American Indian and Alaska Native | 50,000 | 2.6 | 7.6 |
| Black or African American; Asian | 15,451 | 0.8 | 2.4 |
| All other combinations including Black or African American | 83,227 | 4.4 | 12.7 |
| Not Hispanic or Latino | 40,123,525 | 100.0 | (X) |
| Black or African American alone | 37,685,848 | 93.9 | (X) |
| Black or African American in combination | 2,437,677 | 6.1 | 100.0 |
| Black or African American; White | 1,588,362 | 4.0 | 65.2 |
| Black or African American; Some Other Race | 86,923 | 0.2 | 3.6 |
| Black or African American; American Indian and Alaska Native | 237,850 | 0.6 | 9.8 |
| Black or African American; White; American Indian and Alaska Native | 180,848 | 0.5 | 7.4 |
| Black or African American; Asian | 170,144 | 0.4 | 7.0 |
| All other combinations including Black or African American | 173,550 | 0.4 | 7.1 |

(X) Not applicable.

Note: Largest combinations based on Black or African American in-combination population.

Source: U.S. Census Bureau, *2010 Census Redistricting Data (Public Law 94-171) Summary File*, Tables P1 and P2.

Within the population who identified as Black, Hispanics were more likely to report multiple races than non-Hispanics.

In the 2010 Census, 93 percent of people in the Black alone-or-in-combination category reported Black and no other race (see Table 6). Among the 3.1 million people who reported that they were Black and one or more additional races,

the majority reported being Black **and** White (59 percent).

The Black alone-or-in-combination population included 1.9 million people of Hispanic origin, 35 percent of whom reported multiple races. This is more than five times greater than the proportion reporting multiple races among non-Hispanics who identified as Black (6 percent). Most Hispanics who

identified as Black in combination with one or more additional races reported one of two combinations: Black **and** White (38 percent) and Black **and** Some Other Race (35 percent). This contrasts with non-Hispanics who identified as Black in combination with one or more additional races, where about two-thirds reported one combination, Black **and** White.

Table 7.

The American Indian and Alaska Native Population and Largest Multiple-Race Combinations by Hispanic or Latino Origin for the United States: 2010

(For information on confidentiality protection, nonsampling error, and definitions, see www.census.gov/prod/cen2010/doc/pl94-171.pdf)

| Race | Number | Percent | Percentage of American Indian and Alaska Native in combination |
|---|------------------|--------------|--|
| AMERICAN INDIAN AND ALASKA NATIVE ALONE OR IN COMBINATION | | | |
| Total | 5,220,579 | 100.0 | (X) |
| American Indian and Alaska Native alone. | 2,932,248 | 56.2 | (X) |
| American Indian and Alaska Native in combination | 2,288,331 | 43.8 | 100.0 |
| American Indian and Alaska Native; White | 1,432,309 | 27.4 | 62.6 |
| American Indian and Alaska Native; Black or African American | 269,421 | 5.2 | 11.8 |
| American Indian and Alaska Native; White; Black or African American | 230,848 | 4.4 | 10.1 |
| American Indian and Alaska Native; Some Other Race | 115,752 | 2.2 | 5.1 |
| American Indian and Alaska Native; Asian | 58,829 | 1.1 | 2.6 |
| All other combinations including American Indian and Alaska Native | 181,172 | 3.5 | 7.9 |
| Hispanic or Latino | 1,190,904 | 100.0 | (X) |
| American Indian and Alaska Native alone. | 685,150 | 57.5 | (X) |
| American Indian and Alaska Native in combination | 505,754 | 42.5 | 100.0 |
| American Indian and Alaska Native; White | 226,385 | 19.0 | 44.8 |
| American Indian and Alaska Native; Black or African American | 31,571 | 2.7 | 6.2 |
| American Indian and Alaska Native; White; Black or African American | 50,000 | 4.2 | 9.9 |
| American Indian and Alaska Native; Some Other Race | 106,604 | 9.0 | 21.1 |
| American Indian and Alaska Native; Asian | 12,257 | 1.0 | 2.4 |
| All other combinations including American Indian and Alaska Native | 78,937 | 6.6 | 15.6 |
| Not Hispanic or Latino | 4,029,675 | 100.0 | (X) |
| American Indian and Alaska Native alone. | 2,247,098 | 55.8 | (X) |
| American Indian and Alaska Native in combination | 1,782,577 | 44.2 | 100.0 |
| American Indian and Alaska Native; White | 1,205,924 | 29.9 | 67.7 |
| American Indian and Alaska Native; Black or African American | 237,850 | 5.9 | 13.3 |
| American Indian and Alaska Native; White; Black or African American | 180,848 | 4.5 | 10.1 |
| American Indian and Alaska Native; Some Other Race | 9,148 | 0.2 | 0.5 |
| American Indian and Alaska Native; Asian | 46,572 | 1.2 | 2.6 |
| All other combinations including American Indian and Alaska Native | 102,235 | 2.5 | 5.7 |

(X) Not applicable.

Note: Largest combinations based on American Indian and Alaska Native in-combination population.

Source: U.S. Census Bureau, 2010 Census Redistricting Data (Public Law 94-171) Summary File, Tables P1 and P2.

Nearly half of all people who identified as American Indian and Alaska Native reported multiple races.

In 2010, 56 percent of people in the American Indian and Alaska Native alone-or-in-combination category reported one race (see Table 7). Of the 2.3 million who reported American Indian and Alaska Native along with one or more additional races, about 63 percent reported one combination: American Indian and Alaska Native **and** White. American Indian and Alaska Native **and** Black (12 percent) as well as American Indian and Alaska Native

and White **and** Black (10 percent) were also common combinations reported among this population.

Among those who identified as American Indian and Alaska Native, the proportion of Hispanics and non-Hispanics who reported more than one race was about the same—unlike any other race group.

There were 1.2 million people of Hispanic origin who identified as American Indian and Alaska Native, 43 percent of whom reported multiple races. The majority of Hispanics who reported more than one race within the American Indian and

Alaska Native population identified as one of two combinations: American Indian and Alaska Native **and** White (45 percent) and American Indian and Alaska Native **and** Some Other Race (21 percent). Similar to Hispanic American Indians and Alaska Natives, 44 percent of non-Hispanics who identified as American Indian and Alaska Native reported more than one race. However, unlike Hispanics, over two-thirds reported one combination: American Indian and Alaska Native **and** White.

Among people who identified as Asian, 15 percent reported more than one race.

About 85 percent of the Asian alone-or-in-combination population reported Asian and no other race in the 2010 Census, compared to 15 percent who reported Asian along with one or more additional races (see Table 8). Of the 2.6 million who indicated Asian along with one or more additional races, well over half reported being Asian **and** White (61 percent).

The majority of the 0.6 million people of Hispanic origin who identified as Asian alone or in combination reported more than one race (65 percent). Among Hispanics who identified as Asian along with one or more additional races, the most frequently reported combinations were Asian **and** White (35 percent) and Asian **and** Some Other Race (27 percent). About 14 percent of non-Hispanics who identified as Asian reported multiple races—two-thirds of whom identified as one combination, Asian **and** White.

Table 8.
The Asian Population and Largest Multiple-Race Combinations by Hispanic or Latino Origin for the United States: 2010

(For information on confidentiality protection, nonsampling error, and definitions, see www.census.gov/prod/cen2010/doc/pl94-171.pdf)

| Race | Number | Percent | Percentage of Asian in combination |
|--|-------------------|--------------|------------------------------------|
| ASIAN ALONE OR IN COMBINATION | | | |
| Total | 17,320,856 | 100.0 | (X) |
| Asian alone | 14,674,252 | 84.7 | (X) |
| Asian in combination | 2,646,604 | 15.3 | 100.0 |
| Asian; White | 1,623,234 | 9.4 | 61.3 |
| Asian; Some Other Race | 234,462 | 1.4 | 8.9 |
| Asian; Black or African American | 185,595 | 1.1 | 7.0 |
| Asian; Native Hawaiian and Other Pacific Islander ... | 165,690 | 1.0 | 6.3 |
| Asian; White; Native Hawaiian and Other Pacific Islander | 143,126 | 0.8 | 5.4 |
| All other combinations including Asian | 294,497 | 1.7 | 11.1 |
| Hispanic or Latino | 598,146 | 100.0 | (X) |
| Asian alone | 209,128 | 35.0 | (X) |
| Asian in combination | 389,018 | 65.0 | 100.0 |
| Asian; White | 135,522 | 22.7 | 34.8 |
| Asian; Some Other Race | 103,591 | 17.3 | 26.6 |
| Asian; Black or African American | 15,451 | 2.6 | 4.0 |
| Asian; Native Hawaiian and Other Pacific Islander ... | 16,129 | 2.7 | 4.1 |
| Asian; White; Native Hawaiian and Other Pacific Islander | 22,799 | 3.8 | 5.9 |
| All other combinations including Asian | 95,526 | 16.0 | 24.6 |
| Not Hispanic or Latino | 16,722,710 | 100.0 | (X) |
| Asian alone | 14,465,124 | 86.5 | (X) |
| Asian in combination | 2,257,586 | 13.5 | 100.0 |
| Asian; White | 1,487,712 | 8.9 | 65.9 |
| Asian; Some Other Race | 130,871 | 0.8 | 5.8 |
| Asian; Black or African American | 170,144 | 1.0 | 7.5 |
| Asian; Native Hawaiian and Other Pacific Islander ... | 149,561 | 0.9 | 6.6 |
| Asian; White; Native Hawaiian and Other Pacific Islander | 120,327 | 0.7 | 5.3 |
| All other combinations including Asian | 198,971 | 1.2 | 8.8 |

(X) Not applicable.

Note: Largest combinations based on Asian in-combination population.

Source: U.S. Census Bureau, *2010 Census Redistricting Data (Public Law 94-171) Summary File*, Tables P1 and P2.

Table 9.

The Native Hawaiian and Other Pacific Islander Population and Largest Multiple-Race Combinations by Hispanic or Latino Origin for the United States: 2010

(For information on confidentiality protection, nonsampling error, and definitions, see www.census.gov/prod/cen2010/doc/pl94-171.pdf)

| Race | Number | Percent | Percentage of Native Hawaiian and Other Pacific Islander in combination |
|---|------------------|--------------|---|
| NATIVE HAWAIIAN AND OTHER PACIFIC ISLANDER ALONE OR IN COMBINATION | | | |
| Total | 1,225,195 | 100.0 | (X) |
| Native Hawaiian and Other Pacific Islander alone. | 540,013 | 44.1 | (X) |
| Native Hawaiian and Other Pacific Islander in combination | 685,182 | 55.9 | 100.0 |
| Native Hawaiian and Other Pacific Islander; White | 169,991 | 13.9 | 24.8 |
| Native Hawaiian and Other Pacific Islander; Asian | 165,690 | 13.5 | 24.2 |
| Native Hawaiian and Other Pacific Islander; White; Asian | 143,126 | 11.7 | 20.9 |
| Native Hawaiian and Other Pacific Islander; Some Other Race | 58,981 | 4.8 | 8.6 |
| Native Hawaiian and Other Pacific Islander; Black or African American | 50,308 | 4.1 | 7.3 |
| All other combinations including Native Hawaiian and Other Pacific Islander | 97,086 | 7.9 | 14.2 |
| Hispanic or Latino | 210,307 | 100.0 | (X) |
| Native Hawaiian and Other Pacific Islander alone. | 58,437 | 27.8 | (X) |
| Native Hawaiian and Other Pacific Islander in combination | 151,870 | 72.2 | 100.0 |
| Native Hawaiian and Other Pacific Islander; White | 22,187 | 10.5 | 14.6 |
| Native Hawaiian and Other Pacific Islander; Asian | 16,129 | 7.7 | 10.6 |
| Native Hawaiian and Other Pacific Islander; White; Asian | 22,799 | 10.8 | 15.0 |
| Native Hawaiian and Other Pacific Islander; Some Other Race | 46,909 | 22.3 | 30.9 |
| Native Hawaiian and Other Pacific Islander; Black or African American | 4,913 | 2.3 | 3.2 |
| All other combinations including Native Hawaiian and Other Pacific Islander | 38,933 | 18.5 | 25.6 |
| Not Hispanic or Latino | 1,014,888 | 100.0 | (X) |
| Native Hawaiian and Other Pacific Islander alone. | 481,576 | 47.5 | (X) |
| Native Hawaiian and Other Pacific Islander in combination | 533,312 | 52.5 | 100.0 |
| Native Hawaiian and Other Pacific Islander; White | 147,804 | 14.6 | 27.7 |
| Native Hawaiian and Other Pacific Islander; Asian | 149,561 | 14.7 | 28.0 |
| Native Hawaiian and Other Pacific Islander; White; Asian | 120,327 | 11.9 | 22.6 |
| Native Hawaiian and Other Pacific Islander; Some Other Race | 12,072 | 1.2 | 2.3 |
| Native Hawaiian and Other Pacific Islander; Black or African American | 45,395 | 4.5 | 8.5 |
| All other combinations including Native Hawaiian and Other Pacific Islander | 58,153 | 5.7 | 10.9 |

(X) Not applicable.

Note: Largest combinations based on Native Hawaiian and Other Pacific Islander in-combination population.

Source: U.S. Census Bureau, *2010 Census Redistricting Data (Public Law 94-171) Summary File*, Tables P1 and P2.

More than half of all people who identified as Native Hawaiian and Other Pacific Islander reported multiple races.

About 44 percent of people in the Native Hawaiian and Other Pacific Islander alone-or-in-combination

category reported this race and no other (see Table 9). Of the 0.7 million who indicated Native Hawaiian and Other Pacific Islander along with one or more additional races, 25 percent reported Native Hawaiian and Other Pacific Islander **and** White, 24 percent reported

Native Hawaiian and Other Pacific Islander **and** Asian, and 21 percent reported Native Hawaiian and Other Pacific Islander **and** White **and** Asian—representing a fairly even distribution of responses among the largest combinations.

Within the population who identified as Native Hawaiian and Other Pacific Islander, high proportions of both Hispanics (72 percent) and non-Hispanics (53 percent) reported multiple races (0.2 million and 1.0 million, respectively). For Hispanics, the largest combination was Native Hawaiian and Other Pacific Islander **and** Some Other Race (31 percent). Among non-Hispanics, similar proportions (about 28 percent each) reported the following: Native Hawaiian and Other Pacific Islander **and** Asian and Native Hawaiian and Other Pacific Islander **and** White.

Hispanics made up 97 percent of all those classified as only Some Other Race.

Table 10 shows the Some Other Race alone-or-in-combination population (21.7 million) by Hispanic origin in the United States in 2010. Respondents who were classified as Some Other Race alone represented the vast majority of the total (88 percent).

Among the 2.6 million people who reported multiple races that included Some Other Race, the most common combinations were Some Other Race **and** White (66 percent), followed by Some Other Race **and** Black (12 percent), Some Other Race **and** Asian (9 percent), Some Other Race **and** American Indian and Alaska Native (4 percent), and Some Other Race **and** Native Hawaiian and Other Pacific Islander (2 percent). All other combinations including Some Other Race represented 7 percent of the Some Other Race alone-or-in-combination population.

Table 10.
The Some Other Race Population and Largest Multiple-Race Combinations by Hispanic or Latino Origin for the United States: 2010

(For information on confidentiality protection, nonsampling error, and definitions, see www.census.gov/prod/cen2010/doc/pl94-171.pdf)

| Race | Number | Percent | Percentage of Some Other Race in combination |
|---|-------------------|--------------|--|
| SOME OTHER RACE ALONE OR IN COMBINATION | | | |
| Total | 21,748,084 | 100.0 | (X) |
| Some Other Race alone | 19,107,368 | 87.9 | (X) |
| Some Other Race in combination | 2,640,716 | 12.1 | 100.0 |
| Some Other Race; White | 1,740,924 | 8.0 | 65.9 |
| Some Other Race; Black or African American | 314,571 | 1.4 | 11.9 |
| Some Other Race; Asian | 234,462 | 1.1 | 8.9 |
| Some Other Race; American Indian and Alaska Native | 115,752 | 0.5 | 4.4 |
| Some Other Race; Native Hawaiian and Other Pacific Islander | 58,981 | 0.3 | 2.2 |
| All other combinations including Some Other Race | 176,026 | 0.8 | 6.7 |
| Hispanic or Latino | 20,714,218 | 100.0 | (X) |
| Some Other Race alone | 18,503,103 | 89.3 | (X) |
| Some Other Race in combination | 2,211,115 | 10.7 | 100.0 |
| Some Other Race; White | 1,601,125 | 7.7 | 72.4 |
| Some Other Race; Black or African American | 227,648 | 1.1 | 10.3 |
| Some Other Race; Asian | 103,591 | 0.5 | 4.7 |
| Some Other Race; American Indian and Alaska Native | 106,604 | 0.5 | 4.8 |
| Some Other Race; Native Hawaiian and Other Pacific Islander | 46,909 | 0.2 | 2.1 |
| All other combinations including Some Other Race | 125,238 | 0.6 | 5.7 |
| Not Hispanic or Latino | 1,033,866 | 100.0 | (X) |
| Some Other Race alone | 604,265 | 58.4 | (X) |
| Some Other Race in combination | 429,601 | 41.6 | 100.0 |
| Some Other Race; White | 139,799 | 13.5 | 32.5 |
| Some Other Race; Black or African American | 86,923 | 8.4 | 20.2 |
| Some Other Race; Asian | 130,871 | 12.7 | 30.5 |
| Some Other Race; American Indian and Alaska Native | 9,148 | 0.9 | 2.1 |
| Some Other Race; Native Hawaiian and Other Pacific Islander | 12,072 | 1.2 | 2.8 |
| All other combinations including Some Other Race | 50,788 | 4.9 | 11.8 |

(X) Not applicable.

Note: Largest combinations based on Some Other Race in-combination population.

Source: U.S. Census Bureau, 2010 Census Redistricting Data (Public Law 94-171) Summary File, Tables P1 and P2.

In the 2010 Census, approximately 20.7 million people of Hispanic origin were classified as Some Other Race either alone or in combination, compared with only 1 million people of non-Hispanic origin. Nearly all of those who were classified as Some Other Race alone were

of Hispanic origin (18.5 million out of 19.1 million, or 97 percent).

The majority of Hispanics classified as Some Other Race reported only one race (89 percent). However, notable reporting differences were observed for non-Hispanics. Among non-Hispanics who were classified as Some Other Race, about

42 percent reported more than one race (nearly four times higher than their Hispanic counterparts).

In 2010, among Hispanics classified as Some Other Race in combination with one or more additional races, the most common multiple-race group by far was Some Other Race **and** White (72 percent), followed by Some Other Race **and** Black (10 percent). Among non-Hispanics who were classified as Some Other Race and one or more additional races, the most common multiple-race combinations were more evenly distributed—Some Other Race **and** White (33 percent) and Some Other Race **and** Asian (31 percent).

GEOGRAPHIC DISTRIBUTION OF THE MINORITY POPULATION

Nearly half of the West region's population was minority.

In the 2010 Census, just over one-third of the U.S. population reported their race and ethnicity as something other than non-Hispanic White alone. This group, referred to as the “minority” population for this report, increased from 86.9 million

to 111.9 million between 2000 and 2010 (see Table 11). This represented a growth of 29 percent over the decade. The non-Hispanic White alone population also grew over the decade, from 194.6 million to 196.8 million; however, growth was relatively slow for this population (1 percent).

In the four census regions, the proportion of the total population that was minority (proportion minority) ranged from about one-fifth to just under one-half of the total population in 2010.¹⁵ The minority population numbered 33.9 million (47 percent) in the West, 45.8 million (40 percent) in the South, and 17.3 million (31 percent) in the Northeast. In the Midwest, the minority population was 14.8 million and made up 22 percent of the total population.

The minority population grew in every region between 2000 and 2010, but most significantly in the South and West. The South experienced growth of 34 percent in its minority population. Similar growth occurred in the West, with the minority population increasing by 29 percent. The non-Hispanic White alone population also grew in the

South and West between the two decennial censuses, but at a slower rate (4 percent and 3 percent, respectively).

The minority population in the Northeast and Midwest experienced considerable growth between 2000 and 2010. The minority population grew by 21 percent in the Northeast, and the Midwest minority population grew 24 percent. In contrast, the non-Hispanic White alone population in both of these regions declined since 2000 (–3 percent in the Northeast and –1 percent in the Midwest).

California had the largest minority population in 2010.

In 2010, the states with the largest minority populations frequently also had the largest non-Hispanic White alone populations. California led the nation with the largest minority population (22.3 million). Texas (13.7 million), New York (8.1 million), Florida (7.9 million), and Illinois (4.7 million) round out the top five states with the largest minority populations. Most of these states also had the largest non-Hispanic White alone populations—California with 15.0 million, Texas with 11.4 million, New York with 11.3 million, and Florida with 10.9 million. The state with the fifth-largest non-Hispanic White alone population in 2010 was Pennsylvania (10.1 million).

¹⁵ The Northeast census region includes Connecticut, Maine, Massachusetts, New Hampshire, New Jersey, New York, Pennsylvania, Rhode Island, and Vermont. The Midwest census region includes Illinois, Indiana, Iowa, Kansas, Michigan, Minnesota, Missouri, Nebraska, North Dakota, Ohio, South Dakota, and Wisconsin. The South census region includes Alabama, Arkansas, Delaware, the District of Columbia, Florida, Georgia, Kentucky, Louisiana, Maryland, Mississippi, North Carolina, Oklahoma, South Carolina, Tennessee, Texas, Virginia, and West Virginia. The West census region includes Alaska, Arizona, California, Colorado, Hawaii, Idaho, Montana, Nevada, New Mexico, Oregon, Utah, Washington, and Wyoming.

Table 11.
Non-Hispanic White Alone Population and the Minority Population for the United States, Regions, States, and for Puerto Rico: 2000 and 2010

(For information on confidentiality protection, nonsampling error, and definitions, see www.census.gov/prod/cen2010/doc/pl94-171.pdf)

| Area | 2000 | | | | 2010 | | | | Percentage change, 2000 to 2010 | |
|--------------------------------|--------------------|--------------------------|-----------------------|----------------------------------|--------------------|--------------------------|-----------------------|----------------------------------|---------------------------------|-----------------------|
| | Total | Non-Hispanic White alone | Minority ¹ | Percentage minority ¹ | Total | Non-Hispanic White alone | Minority ¹ | Percentage minority ¹ | Non-Hispanic White alone | Minority ¹ |
| United States | 281,421,906 | 194,552,774 | 86,869,132 | 30.9 | 308,745,538 | 196,817,552 | 111,927,986 | 36.3 | 1.2 | 28.8 |
| REGION | | | | | | | | | | |
| Northeast | 53,594,378 | 39,327,262 | 14,267,116 | 26.6 | 55,317,240 | 38,008,094 | 17,309,146 | 31.3 | -3.4 | 21.3 |
| Midwest | 64,392,776 | 52,386,131 | 12,006,645 | 18.6 | 66,927,001 | 52,096,633 | 14,830,368 | 22.2 | -0.6 | 23.5 |
| South | 100,236,820 | 65,927,794 | 34,309,026 | 34.2 | 114,555,744 | 68,706,462 | 45,849,282 | 40.0 | 4.2 | 33.6 |
| West | 63,197,932 | 36,911,587 | 26,286,345 | 41.6 | 71,945,553 | 38,006,363 | 33,939,190 | 47.2 | 3.0 | 29.1 |
| STATE | | | | | | | | | | |
| Alabama | 4,447,100 | 3,125,819 | 1,321,281 | 29.7 | 4,779,736 | 3,204,402 | 1,575,334 | 33.0 | 2.5 | 19.2 |
| Alaska | 626,932 | 423,788 | 203,144 | 32.4 | 710,231 | 455,320 | 254,911 | 35.9 | 7.4 | 25.5 |
| Arizona | 5,130,632 | 3,274,258 | 1,856,374 | 36.2 | 6,392,017 | 3,695,647 | 2,696,370 | 42.2 | 12.9 | 45.2 |
| Arkansas | 2,673,400 | 2,100,135 | 573,265 | 21.4 | 2,915,918 | 2,173,469 | 742,449 | 25.5 | 3.5 | 29.5 |
| California | 33,871,648 | 15,816,790 | 18,054,858 | 53.3 | 37,253,956 | 14,956,253 | 22,297,703 | 59.9 | -5.4 | 23.5 |
| Colorado | 4,301,261 | 3,202,880 | 1,098,381 | 25.5 | 5,029,196 | 3,520,793 | 1,508,403 | 30.0 | 9.9 | 37.3 |
| Connecticut | 3,405,565 | 2,638,845 | 766,720 | 22.5 | 3,574,097 | 2,546,262 | 1,027,835 | 28.8 | -3.5 | 34.1 |
| Delaware | 783,600 | 567,973 | 215,627 | 27.5 | 897,934 | 586,752 | 311,182 | 34.7 | 3.3 | 44.3 |
| District of Columbia | 572,059 | 159,178 | 412,881 | 72.2 | 601,723 | 209,464 | 392,259 | 65.2 | 31.6 | -5.0 |
| Florida | 15,982,378 | 10,458,509 | 5,523,869 | 34.6 | 18,801,310 | 10,884,722 | 7,916,588 | 42.1 | 4.1 | 43.3 |
| Georgia | 8,186,453 | 5,128,661 | 3,057,792 | 37.4 | 9,687,653 | 5,413,920 | 4,273,733 | 44.1 | 5.6 | 39.8 |
| Hawaii | 1,211,537 | 277,091 | 934,446 | 77.1 | 1,360,301 | 309,343 | 1,050,958 | 77.3 | 11.6 | 12.5 |
| Idaho | 1,293,953 | 1,139,291 | 154,662 | 12.0 | 1,567,582 | 1,316,243 | 251,339 | 16.0 | 15.5 | 62.5 |
| Illinois | 12,419,293 | 8,424,140 | 3,995,153 | 32.2 | 12,830,632 | 8,167,753 | 4,662,879 | 36.3 | -3.0 | 16.7 |
| Indiana | 6,080,485 | 5,219,373 | 861,112 | 14.2 | 6,483,802 | 5,286,453 | 1,197,349 | 18.5 | 1.3 | 39.0 |
| Iowa | 2,926,324 | 2,710,344 | 215,980 | 7.4 | 3,046,355 | 2,701,123 | 345,232 | 11.3 | -0.3 | 59.8 |
| Kansas | 2,688,418 | 2,233,997 | 454,421 | 16.9 | 2,853,118 | 2,230,539 | 622,579 | 21.8 | -0.2 | 37.0 |
| Kentucky | 4,041,769 | 3,608,013 | 433,756 | 10.7 | 4,339,367 | 3,745,655 | 593,712 | 13.7 | 3.8 | 36.9 |
| Louisiana | 4,468,976 | 2,794,391 | 1,674,585 | 37.5 | 4,533,372 | 2,734,884 | 1,798,488 | 39.7 | -2.1 | 7.4 |
| Maine | 1,274,923 | 1,230,297 | 44,626 | 3.5 | 1,328,361 | 1,254,297 | 74,064 | 5.6 | 2.0 | 66.0 |
| Maryland | 5,296,486 | 3,286,547 | 2,009,939 | 37.9 | 5,773,552 | 3,157,958 | 2,615,594 | 45.3 | -3.9 | 30.1 |
| Massachusetts | 6,349,097 | 5,198,359 | 1,150,738 | 18.1 | 6,547,629 | 4,984,800 | 1,562,829 | 23.9 | -4.1 | 35.8 |
| Michigan | 9,938,444 | 7,806,691 | 2,131,753 | 21.4 | 9,883,640 | 7,569,939 | 2,313,701 | 23.4 | -3.0 | 8.5 |
| Minnesota | 4,919,479 | 4,337,143 | 582,336 | 11.8 | 5,303,925 | 4,405,142 | 898,783 | 16.9 | 1.6 | 54.3 |
| Mississippi | 2,844,658 | 1,727,908 | 1,116,750 | 39.3 | 2,967,297 | 1,722,287 | 1,245,010 | 42.0 | -0.3 | 11.5 |
| Missouri | 5,595,211 | 4,686,474 | 908,737 | 16.2 | 5,988,927 | 4,850,748 | 1,138,179 | 19.0 | 3.5 | 25.2 |
| Montana | 902,195 | 807,823 | 94,372 | 10.5 | 989,415 | 868,628 | 120,787 | 12.2 | 7.5 | 28.0 |
| Nebraska | 1,711,263 | 1,494,494 | 216,769 | 12.7 | 1,826,341 | 1,499,753 | 326,588 | 17.9 | 0.4 | 50.7 |
| Nevada | 1,998,257 | 1,303,001 | 695,256 | 34.8 | 2,700,551 | 1,462,081 | 1,238,470 | 45.9 | 12.2 | 78.1 |
| New Hampshire | 1,235,786 | 1,175,252 | 60,534 | 4.9 | 1,316,470 | 1,215,050 | 101,420 | 7.7 | 3.4 | 67.5 |
| New Jersey | 8,414,350 | 5,557,209 | 2,857,141 | 34.0 | 8,791,894 | 5,214,878 | 3,577,016 | 40.7 | -6.2 | 25.2 |
| New Mexico | 1,819,046 | 813,495 | 1,005,551 | 55.3 | 2,059,179 | 833,810 | 1,225,369 | 59.5 | 2.5 | 21.9 |
| New York | 18,976,457 | 11,760,981 | 7,215,476 | 38.0 | 19,378,102 | 11,304,247 | 8,073,855 | 41.7 | -3.9 | 11.9 |
| North Carolina | 8,049,313 | 5,647,155 | 2,402,158 | 29.8 | 9,535,483 | 6,223,995 | 3,311,488 | 34.7 | 10.2 | 37.9 |
| North Dakota | 642,200 | 589,149 | 53,051 | 8.3 | 672,591 | 598,007 | 74,584 | 11.1 | 1.5 | 40.6 |
| Ohio | 11,353,140 | 9,538,111 | 1,815,029 | 16.0 | 11,536,504 | 9,359,263 | 2,177,241 | 18.9 | -1.9 | 20.0 |
| Oklahoma | 3,450,654 | 2,556,368 | 894,286 | 25.9 | 3,751,351 | 2,575,381 | 1,175,970 | 31.3 | 0.7 | 31.5 |
| Oregon | 3,421,399 | 2,857,616 | 563,783 | 16.5 | 3,831,074 | 3,005,848 | 825,226 | 21.5 | 5.2 | 46.4 |
| Pennsylvania | 12,281,054 | 10,322,455 | 1,958,599 | 15.9 | 12,702,379 | 10,094,652 | 2,607,727 | 20.5 | -2.2 | 33.1 |
| Rhode Island | 1,048,319 | 858,433 | 189,886 | 18.1 | 1,052,567 | 803,685 | 248,882 | 23.6 | -6.4 | 31.1 |
| South Carolina | 4,012,012 | 2,652,291 | 1,359,721 | 33.9 | 4,625,364 | 2,962,740 | 1,662,624 | 35.9 | 11.7 | 22.3 |
| South Dakota | 754,844 | 664,585 | 90,259 | 12.0 | 814,180 | 689,502 | 124,678 | 15.3 | 3.7 | 38.1 |
| Tennessee | 5,689,283 | 4,505,930 | 1,183,353 | 20.8 | 6,346,105 | 4,800,782 | 1,545,323 | 24.4 | 6.5 | 30.6 |
| Texas | 20,851,820 | 10,933,313 | 9,918,507 | 47.6 | 25,145,561 | 11,397,345 | 13,748,216 | 54.7 | 4.2 | 38.6 |
| Utah | 2,233,169 | 1,904,265 | 328,904 | 14.7 | 2,763,885 | 2,221,719 | 542,166 | 19.6 | 16.7 | 64.8 |
| Vermont | 608,827 | 585,431 | 23,396 | 3.8 | 625,741 | 590,223 | 35,518 | 5.7 | 0.8 | 51.8 |
| Virginia | 7,078,515 | 4,965,637 | 2,112,878 | 29.8 | 8,001,024 | 5,186,450 | 2,814,574 | 35.2 | 4.4 | 33.2 |
| Washington | 5,894,121 | 4,652,490 | 1,241,631 | 21.1 | 6,724,540 | 4,876,804 | 1,847,736 | 27.5 | 4.8 | 48.8 |
| West Virginia | 1,808,344 | 1,709,966 | 98,378 | 5.4 | 1,852,994 | 1,726,256 | 126,738 | 6.8 | 1.0 | 28.8 |
| Wisconsin | 5,363,675 | 4,681,630 | 682,045 | 12.7 | 5,686,986 | 4,738,411 | 948,575 | 16.7 | 1.2 | 39.1 |
| Wyoming | 493,782 | 438,799 | 54,983 | 11.1 | 563,626 | 483,874 | 79,752 | 14.1 | 10.3 | 45.0 |
| Puerto Rico | 3,808,610 | 33,966 | 3,774,644 | 99.1 | 3,725,789 | 26,946 | 3,698,843 | 99.3 | -20.7 | -2.0 |

¹ For this report, "minority" refers to people who reported their ethnicity and race as something other than non-Hispanic White alone in the decennial census.

Sources: U.S. Census Bureau, *Census 2000 Redistricting Data (Public Law 94-171) Summary File*, Tables PL1 and PL2; and *2010 Census Redistricting Data (Public Law 94-171) Summary File*, Tables P1 and P2.

Texas joined California, the District of Columbia, Hawaii, and New Mexico in having a “majority-minority” population.

In California, the District of Columbia, Hawaii, New Mexico, and Texas, the population was majority-minority (i.e., over 50 percent of the population was minority) in 2010 (see Table 11). Hawaii had the highest proportion minority (77 percent), followed by California and New Mexico, each with 60 percent. California, New Mexico, and Hawaii had a majority-minority population in 2000 as well, and this population grew 24 percent, 22 percent, and 13 percent, respectively, between 2000 and 2010. About 55 percent of Texas’ population was minority in 2010, up from 48 percent in 2000. Over the decade, the minority population in Texas grew by 39 percent. The District of Columbia’s population was also majority-minority (65 percent) but was down from 72 percent in 2000.

In 2010, the vast majority of the population identified as non-Hispanic White alone in four states. In the New England area, Maine, New Hampshire, and Vermont all had populations that were predominantly non-Hispanic White alone (94 percent, 92 percent, and 94 percent, respectively). The minority population grew by at least 50 percent in each of these states between 2000 and 2010—by 66 percent in Maine, by 68 percent in New Hampshire, and by 52 percent in Vermont, which outpaced growth of the non-Hispanic White alone population (2 percent, 3 percent, and 1 percent, respectively). West Virginia also had a predominantly non-Hispanic White alone population in 2010 (93 percent). While West Virginia’s non-Hispanic White alone population increased by 1 percent over the decade, the

state’s minority population grew 29 percent.

Nevada’s minority population grew the fastest between 2000 and 2010.

There were a number of other states where significant proportions of the population were minority. The minority population in Arizona, Florida, Georgia, Maryland, and Nevada approached 50 percent in 2010. Among these states, Nevada had the highest proportion minority (46 percent), followed by Maryland (45 percent), Georgia (44 percent), and Arizona and Florida (each about 42 percent).

The minority population grew in all 50 states between 2000 and 2010. Among all states, Nevada’s minority population increased the most (78 percent). Each of the five states that had a proportion minority approaching 50 percent also experienced at least 30 percent growth in this population. The minority population grew by 40 percent in Georgia and by 30 percent in Maryland across the decade. Arizona’s and Florida’s minority population increased even more (45 percent and 43 percent, respectively). In the District of Columbia, the minority population declined by 5 percent.

The non-Hispanic White alone population also experienced growth between 2000 and 2010 in 35 states and the District of Columbia. Eight states and the District of Columbia had non-Hispanic White alone populations that increased at least 10 percent between the decennial censuses. The District of Columbia had the largest percentage increase in the non-Hispanic White alone population (32 percent), followed by Utah (17 percent), Idaho (16 percent), and Arizona (13 percent). Hawaii, Nevada, and South Carolina all

had about 12 percent growth in the non-Hispanic White alone population. The non-Hispanic White alone population grew by about 10 percent in North Carolina and Wyoming.

The non-Hispanic White alone population declined in 15 states between 2000 and 2010. Eleven of the states with declines in the non-Hispanic White alone population were in the Northeast and Midwest. In particular, 6 of the 9 states in the Northeast had declines in the non-Hispanic White alone population—Connecticut (–4 percent), Massachusetts (–4 percent), New Jersey (–6 percent), New York (–4 percent), Pennsylvania (–2 percent), and Rhode Island (–6 percent). The five states in the Midwest with declines in the non-Hispanic White alone population were Illinois (–3 percent), Iowa (–0.3 percent), Kansas (–0.2 percent), Michigan (–3 percent), and Ohio (–2 percent). Fewer states in the South saw declines in the non-Hispanic White alone population (Louisiana, –2 percent; Maryland, –4 percent; and Mississippi, –0.3 percent). California was the only state in the West with a non-Hispanic White alone population that declined (–5 percent).

In about one-tenth of all counties, the minority population composed 50 percent or more of the total population.

Out of 3,143 counties, there were 348 where at least half of the population was minority in 2010 (see Figure 4). The minority population was concentrated in counties along the East coast from Massachusetts to Florida and in counties within the Gulf Coast states of Alabama, Mississippi, and Louisiana. A band of counties where a high proportion of the population was minority stretched

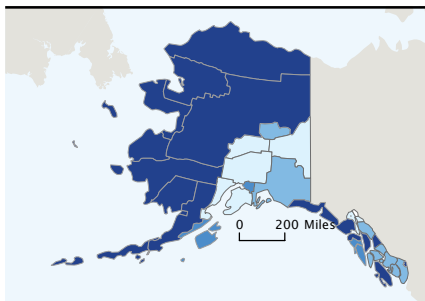


Figure 4.

Minority Population as a Percentage of County Population: 2010

(Minority refers to people who reported their ethnicity and race as something other than non-Hispanic White alone in the 2010 Census. For information on confidentiality protection, nonsampling error, and definitions, see www.census.gov/prod/cen2010/doc/pl94-171.pdf)

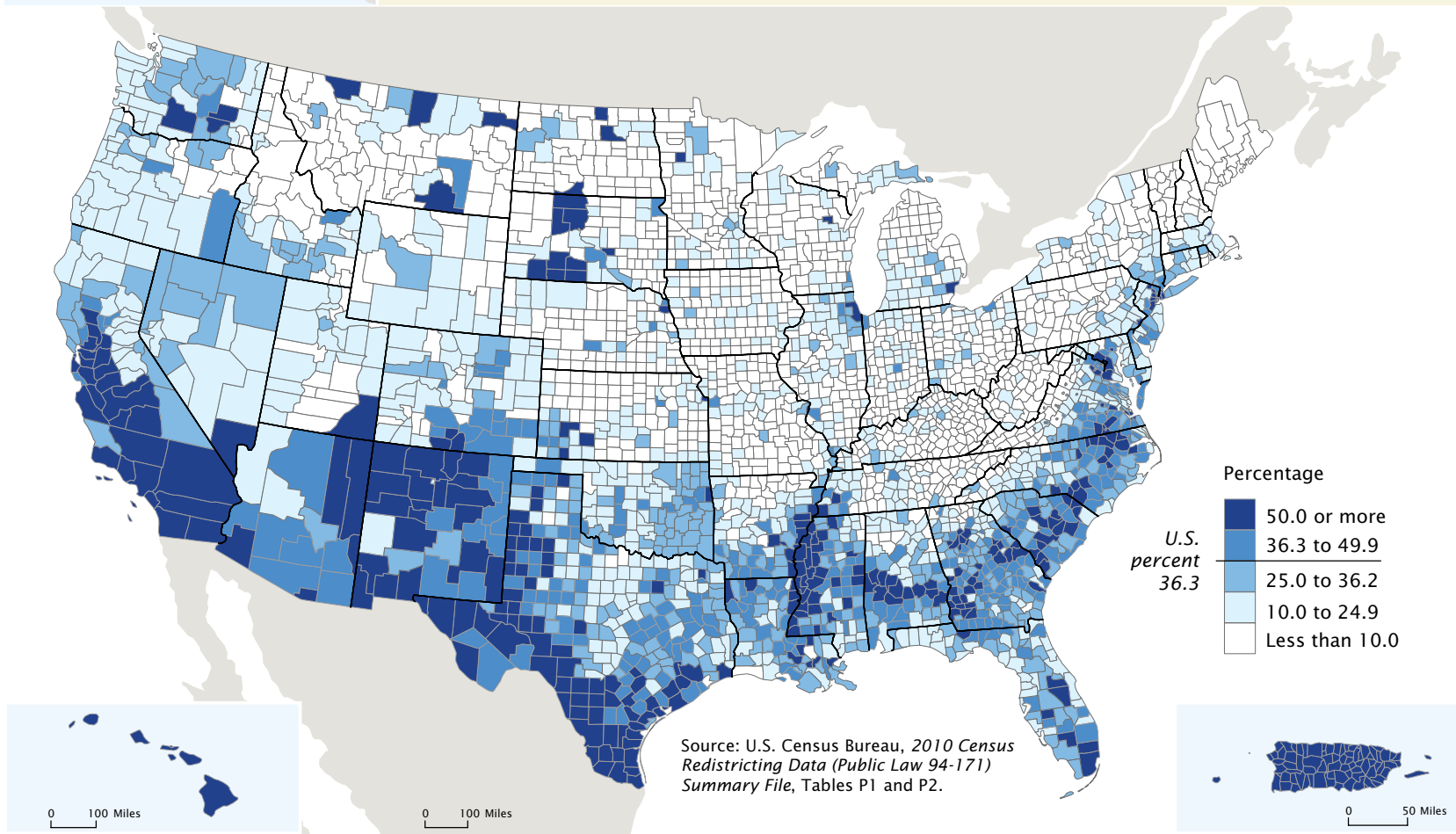
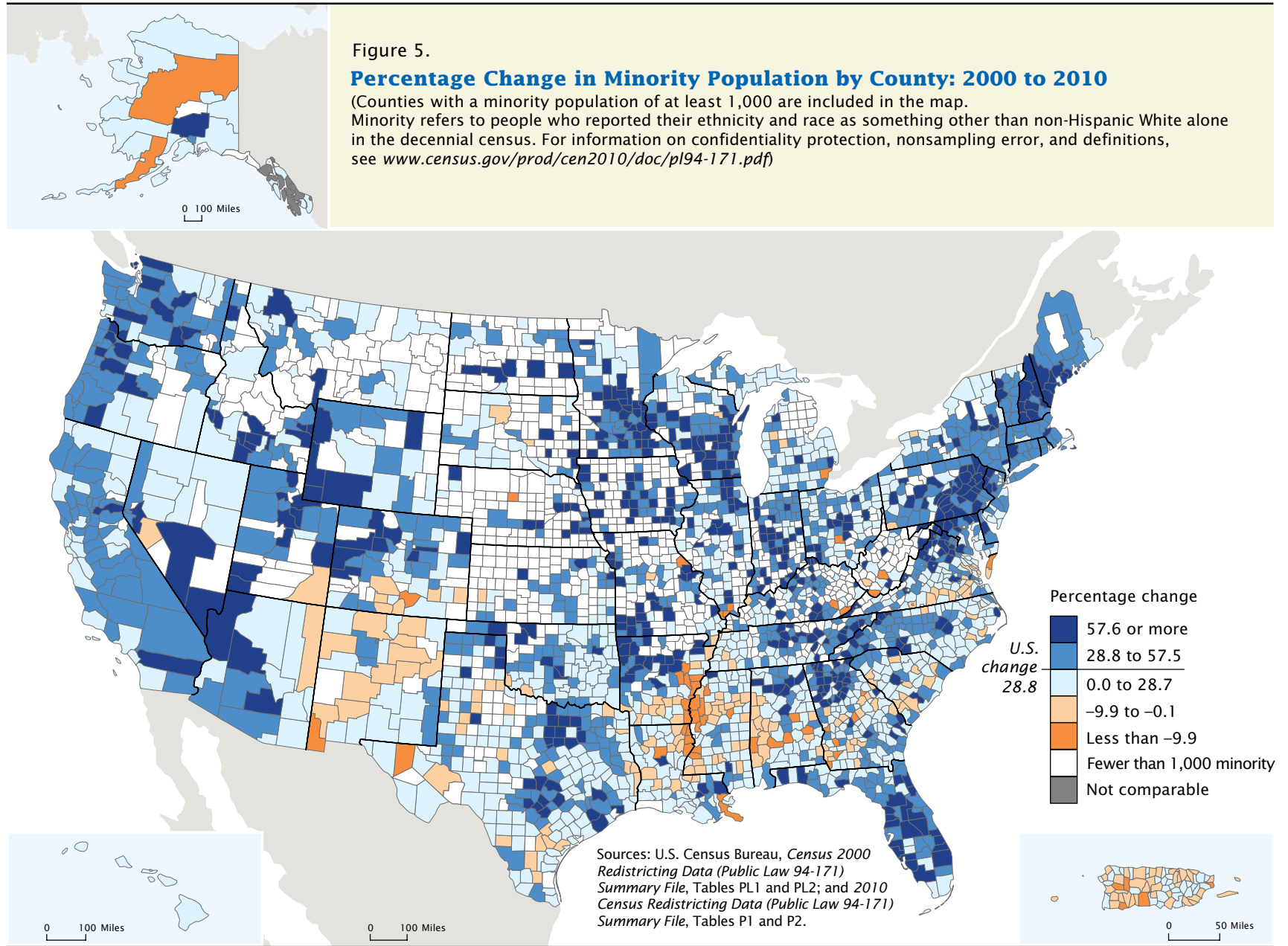


Figure 5.

Percentage Change in Minority Population by County: 2000 to 2010

(Counties with a minority population of at least 1,000 are included in the map. Minority refers to people who reported their ethnicity and race as something other than non-Hispanic White alone in the decennial census. For information on confidentiality protection, nonsampling error, and definitions, see www.census.gov/prod/cen2010/doc/pl94-171.pdf)



across the southwest through the states lining the U.S.-Mexico border (Texas, New Mexico, Arizona, and California). Additionally, counties in states along the Pacific coast, and in Hawaii and Alaska, also had high proportions of the population that were minority.

In 2010, there were 1,205 counties where less than 10 percent of the population was minority. The majority of these counties were located in Appalachia, in the upper Northeast, and in the central and upper Midwest.

Growth in the minority population occurred in many counties across the nation.

The map in Figure 5 illustrates the percentage change in the minority population between 2000 and 2010 for counties with a minority population of at least 1,000 in 2010. Minority population growth was concentrated in counties in the Pacific Northwest, Pacific Southwest, western Arizona, southern Nevada, and areas of the interior West. Counties in the mid-Atlantic corridor, Florida, and in clusters throughout the southeastern states also had significant growth in their minority population. Additionally, multiple groupings of counties in Texas, northern Illinois, southern Wisconsin, and southern Minnesota experienced substantial growth in their minority population between 2000 and 2010.

There were 53 counties with a minority population of at least 1,000 that experienced a decline of at least 10 percent in their minority population between 2000 and 2010. Many of these counties were located along the Mississippi River in Arkansas, Louisiana, and

Mississippi, as well as in central and western Alabama.

SUMMARY

This report presented data from the 2010 Census that illustrated the nation's changing racial and ethnic diversity. The examination of racial and ethnic group distributions nationally shows that while the non-Hispanic White alone population is still numerically and proportionally the largest major race and ethnic group in the United States, it is also growing at the slowest rate. During the past 10 years, it has been the Hispanic population and the Asian population that have grown considerably, in part due to relatively higher levels of immigration.

Additional notable trends were presented in this report. The Black population, the second-largest major race group, did experience growth over the decade; however, it grew at a slower rate than all other major race groups except for White. Racial classification issues continue to persist among those who identify as Hispanic, resulting in a substantial proportion of that population being categorized as Some Other Race. People reporting more than one race was another fast-growing population and made up large proportions of the American Indian and Alaska Native population and Native Hawaiian and Other Pacific Islander population. Geographically, there are a number of areas, particularly in the South and West, that have large proportions minority, which also grew considerably between 2000 and 2010. Overall, the U.S. population has become more racially and ethnically diverse over time. Throughout the decade, the Census

Bureau will release additional information on race and Hispanic origin population groups, which will provide more insights to the nation's racial and ethnic diversity.

ABOUT THE 2010 CENSUS

Why was the 2010 Census conducted?

The U.S. Constitution mandates that a census be taken in the United States every 10 years. This is required in order to determine the number of seats each state is to receive in the U.S. House of Representatives.

Why did the 2010 Census ask the questions on Hispanic origin and race?

The Census Bureau collects data on Hispanic origin and race to fulfill a variety of legislative and program requirements. Data on Hispanic origin and race are used in the legislative redistricting process carried out by the states and in monitoring local jurisdictions' compliance with the Voting Rights Act. More broadly, data on Hispanic origin and race are critical for research that underlies many policy decisions at all levels of government.

How do data from the question on Hispanic origin and race benefit me, my family, and my community?

All levels of government need information on Hispanic origin and race to implement and evaluate programs, or enforce laws, such as the Civil Rights Act, Voting Rights Act, Fair Housing Act, Equal Employment Opportunity Act, and the 2010 Census Redistricting Data Program.

Both public and private organizations use Hispanic origin and race

information to find areas where groups may need special services and to plan and implement education, housing, health, and other programs that address these needs. For example, a school system might use this information to design cultural activities that reflect the diversity in their community, or a business could use it to select the mix of merchandise it will sell in a new store. Census information also helps identify areas where residents might need services of particular importance to certain racial or ethnic groups, such as screening for hypertension or diabetes.

FOR MORE INFORMATION

For more information on race and Hispanic origin in the United States, visit the Census Bureau's Internet site at <www.census.gov/population/www/socdemo/hispanic/hispanic.html> and <www.census.gov/population/www/socdemo/race/race.html>.

Information on confidentiality protection, nonsampling error, and definitions is available at <www.census.gov/prod/cen2010/doc/pl94-171.pdf>.

Data on race and Hispanic origin from the *2010 Census Redistricting Data (Public Law 94-171) Summary File* were released on a state-by-state basis. The 2010 Census redistricting data are available on the Internet at <<http://factfinder2.census.gov/main.html>> and on DVD.

For more information on specific race and ethnic groups in the United States, go to <www.census.gov/> and click on "Minority Links." This Web page includes information about the 2010 Census and provides links to reports based on past censuses and surveys focusing on the social and economic characteristics of the Hispanic or Latino, Black or African American, American Indian and

Alaska Native, Asian, and Native Hawaiian and Other Pacific Islander populations.

Information on other population and housing topics is presented in the 2010 Census Briefs series, located on the Census Bureau's Web site at <www.census.gov/prod/cen2010/>. This series presents information about race, Hispanic origin, age, sex, household type, housing tenure, and people who reside in group quarters.

For more information about the 2010 Census, including data products, call the Customer Services Center at 1-800-923-8282. You can also visit the Census Bureau's Question and Answer Center at <ask.census.gov> to submit your questions online.

